

# Aon's Fifth Edition Life Sciences Clinical Trials Risk Map

Eight total symbols, defining specific insurance requirements on a country by country basis

Four colors/shadings, highlighting various degrees of compulsory clinical trials insurance requirements

## Key Highlights

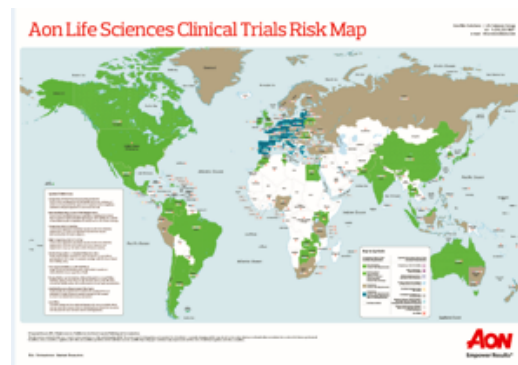
- The fifth edition of Aon's Life Sciences Clinical Trials Risk Map provides an overview of the global clinical trials risk landscape in more than 80 countries, highlighting potential challenges for life sciences companies that conduct global clinical trials
- The Life Sciences industry continues to look outside of the U.S. to conduct clinical trials in order to advance their products through the regulatory approval process
- Each country has specific clinical trials liability insurance requirements that trial sponsors must comply with in order to commence a clinical trial
- In most countries, local admitted certificates of insurance with specific requirements are usually required for regulatory filings prior to trial approval
- Delays or errors in certificates of insurance can result in delays in regulatory filings and approvals by ethics committees, ministries of health and other oversight regulatory authorities which can negatively impact the reputation of life sciences companies and their clinical trial timelines
- Aon's network of offices and experience in placing clinical trials insurance in over 80 countries provides our clients with the expertise and knowledge necessary to navigate through the complexities of clinical trials insurance requirements for our clients

## New Symbols:

The fifth edition of the Clinical Trials Risk map features two new characteristics for clinical trial sponsors, distinguishing between:

- Countries where clinical trials insurance policies cover both pre-screened subjects in addition to the standard coverage of enrolled subjects
- Countries where direct insurance reimbursement to the subject is allowed versus the standard reimbursement to the study sponsor

Download the Map at  
[aon.com/clinicalriskmap](http://aon.com/clinicalriskmap)



We're here to  
empower results

**James Walters**  
Life Sciences Practice Leader  
1.215.255.1795  
[james.walters@aon.com](mailto:james.walters@aon.com)

**Edwin Albers**  
Director, Aon Life Sciences Practice  
1.503.306.2866  
[edwin.albers@aon.com](mailto:edwin.albers@aon.com)

**Roland Skenderi**  
Vice President,  
Aon Global Client Network  
1.215.255.1782  
[roland.skenderi@aon.com](mailto:roland.skenderi@aon.com)