



COVID-19 Employee Impact Model

Estimate the short-term impact of COVID-19 on your employee population. Available for US and global workforce populations.

COVID-19-Related Challenges For Employers



Inability to model and mitigate the full impact of COVID-19 on employee health, workers compensation, and workforce planning



Lack of insight into the employee risk surrounding COVID-19 across geographic regions



Insufficient information around the financial and cost impact of COVID-19



Difficulty putting together an informed action plan based on the latest epidemiological data

We're here to empower results:

To learn more about the COVID-19 Employee Impact Model, please contact your local Aon representative or email: health@aon.com

Which organizations are best candidates for this analysis?

The COVID-19 Employee Impact Model can provide excellent value for mid-sized to very large companies, however smaller employer sizes may see limited value in the results.

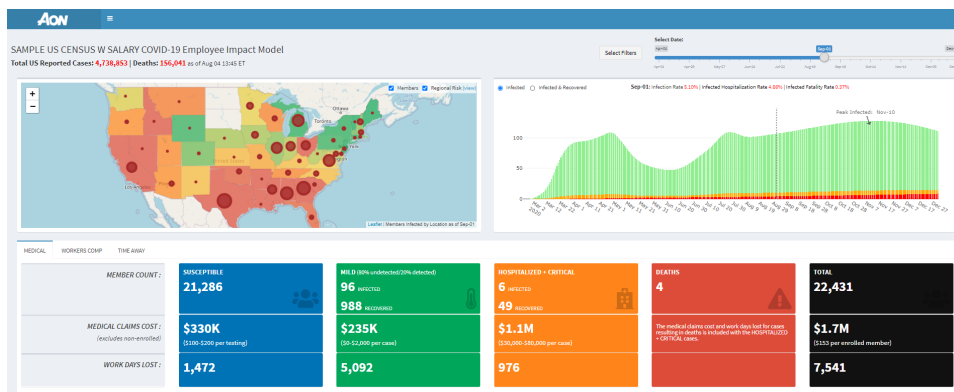
Cutting Edge Data Modeling

Aon's COVID-19 Employee Impact Model forecasts the impact on your employee population based on geographic-specific infection rates and advanced epidemiologic models. The model draws from several quality epidemiological sources, including The U.S. Centers for Disease Control and Prevention (CDC) and The COVID Tracking Project, as well as consultation with national carriers and labs.

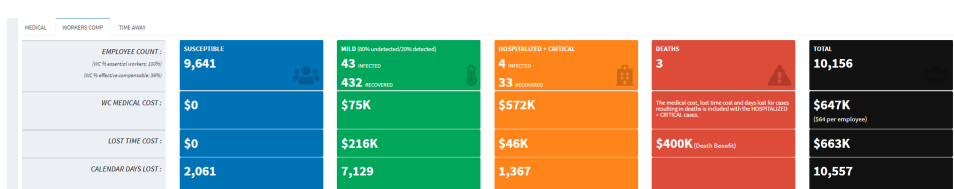
Sample Model Results

Select a date to see projected cases and claims cost for your employee population.

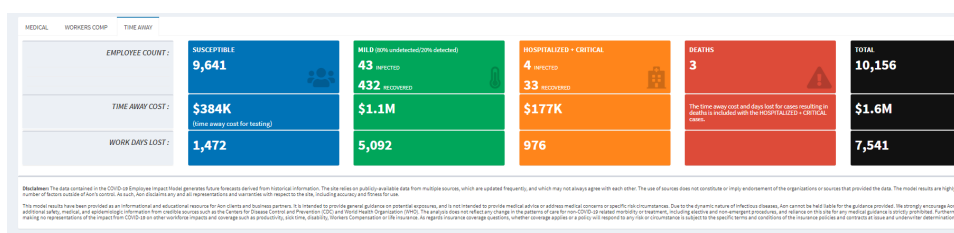
SAMPLE MODEL 1 – MEDICAL



SAMPLE MODEL 2 – WORKERS COMPENSATION



SAMPLE MODEL 3 –TIME AWAY



COVID-19 Employee Impact Model

The model provides a short-term forecast to estimate the COVID-19 impact on your employee population using your census data.

Key Features Include:

- Adjust for essential employees and industry-specific infection exposure
- View population impact by geographic area over time
- Visual heat map to reflect the latest COVID-19 risk by geography, starting with the US
- Estimate the number of mild cases, hospitalizations, ICU visits, and fatalities based on specific population demographics
- Adjust for future lockdown and mitigation controls to model future COVID-19 infection waves by geography
- Estimate health care costs associated with testing and treatment, as well as health care cost offsets due to utilization reductions (US only)
- Estimate employee days lost by case severity
- Estimate the cost of time away by case severity inclusive of sick time, Short-Term Disability, caregiving time away, and worker replacement costs (US only)
- Project hypothetical Workers Compensation costs for medical and lost time for COVID-19 claims (US only)
- Advanced filtering and custom subgrouping
- Powered by a cloud-based platform updated regularly with latest data and forecasts

How Aon Can Help

In addition to providing your real-time COVID-19 impact results, Aon can help you leverage the data to make strategic decisions surrounding your workforce, including benefits costs, time off, and paid leave. The model has broad applicability and its functionality and scope is rapidly increasing over time.

About Aon

Aon plc (NYSE:AON) is a leading global professional services firm providing a broad range of risk, retirement and health solutions. Our 50,000 colleagues in 120 countries empower results for clients by using proprietary data and analytics to deliver insights that reduce volatility and improve performance.

© Aon plc 2020. All rights reserved.

Disclaimer

The data contained in the COVID-19 Employee Impact Model generates future forecasts derived from historical information. The site relies on publicly-available data from multiple sources, which are updated frequently, and which may not always agree with each other. The use of sources does not constitute or imply endorsement of the organizations or sources that provided the data. The model results are highly dependent upon a number of factors outside of Aon's control. As such, Aon disclaims any and all representations and warranties with respect to the site, including accuracy and fitness for use.

This model results have been provided as an informational and educational resource for Aon clients and business partners. It is intended to provide general guidance on potential exposures, and is not intended to provide medical advice or address medical concerns or specific risk circumstances. Due to the dynamic nature of infectious diseases, Aon cannot be held liable for the guidance provided. We strongly encourage Aon clients to seek additional safety, medical, and epidemiologic information from credible sources such as the Centers for Disease Control and Prevention (CDC) and World Health Organization (WHO). The analysis does not reflect any change in the patterns of care for non-COVID-19 related morbidity or treatment, including elective and non-emergent procedures, and reliance on this site for any medical guidance is strictly prohibited. Furthermore, we are currently making no representations of the impact from COVID-19 on other workforce impacts and coverage such as productivity, sick time, disability, Workers Compensation or life insurance. As regards insurance coverage questions, whether coverage applies or a policy will respond to any risk or circumstance is subject to the specific terms and conditions of the insurance policies and contracts at issue and underwriter determinations.

