

# Selecting Fund Managers and Consultants

Research partnership between Aon and Leeds University Business School

DB trustees responsible for circa £1.5 trillion of pension scheme assets in UK



## Large schemes value:

Investment philosophy, decision-making and risk management

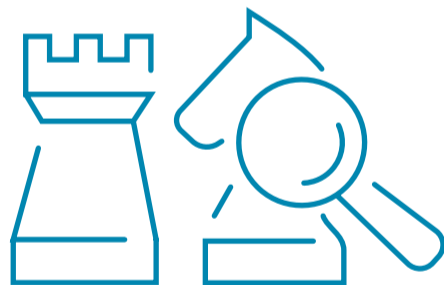
in fund managers



## Small schemes value:

Past performance, costs and fees, fund size, firm size and volatility

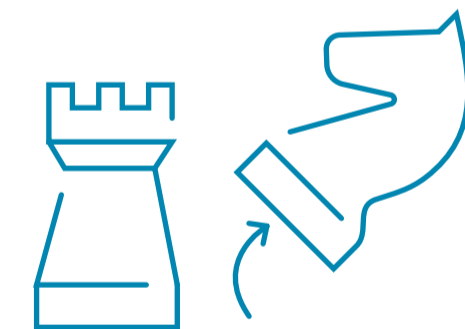
in fund managers



**64%** of trustees review their investment strategy at least once a year



**57%** review their investment managers at least once a year



Changing investment strategy is the primary motivation in reviewing investment management

For more information and analysis, read our full report *'Selecting Fund Managers and Consultants – What Do Trustees Look For?'*, developed in partnership with Leeds University Business School, at [aon.com/investmentuk](http://aon.com/investmentuk) or contact your Aon consultant.

# Selecting Fund Managers and Consultants

Research partnership between Aon and Leeds University Business School

DB trustees responsible for circa £1.5 trillion of pension scheme assets in UK



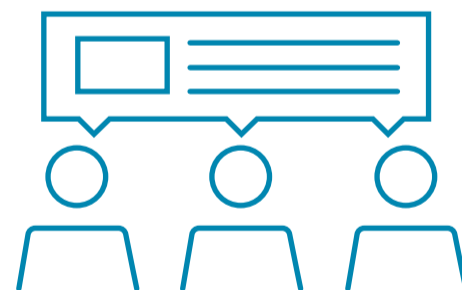
## Schemes value:

Clear advice, management of risk, understanding of situation / scheme / goals of trustees

in investment consultants



Trustees place considerable emphasis on consultant advice, especially small and medium schemes



**19%** of schemes do not consider alternatives to the consultant advice



Consultants advice is rarely rejected, **76%** saying rejection is not often

For more information and analysis, read our full report *'Selecting Fund Managers and Consultants – What Do Trustees Look For?'*, developed in partnership with Leeds University Business School, at [aon.com/investmentuk](http://aon.com/investmentuk) or contact your Aon consultant.

  
**UNIVERSITY OF LEEDS**  
Leeds University Business School

**AON**

## About Aon

Aon plc (NYSE:AON) is a leading global professional services firm providing a broad range of risk, retirement and health solutions.

Our 50,000 colleagues in 120 countries empower results for clients by using proprietary data and analytics to deliver insights that reduce volatility and improve performance.

For further information on our capabilities and to learn how we empower results for clients, please visit <http://aon.mediaroom.com>.

© Aon plc 2017. All rights reserved.

The information contained herein and the statements expressed are of a general nature and are not intended to address the circumstances of any particular individual or entity. Although we endeavor to provide accurate and timely information and use sources we consider reliable, there can be no guarantee that such information is accurate as of the date it is received or that it will continue to be accurate in the future. No one should act on such information without appropriate professional advice after a thorough examination of the particular situation.

Aon Hewitt Limited is authorised and regulated by the Financial Conduct Authority. Registered in England & Wales. Registered No: 4396810. Registered Office: The Aon Centre, The Leadenhall Building, 122 Leadenhall Street, London, EC3V 4AN

[www.aon.com](http://www.aon.com)

