

Current Watches and Warnings

All coastal Tropical Storm Warnings have been discontinued.

Current Details from the National Hurricane Center (NHC)

COORDINATES: 41.6° north, 72.4° west

LOCATION: 20 miles (35 kilometers) southeast of Hartford, Connecticut

MOVEMENT: west-northwest at 7 mph (11 kph)

WINDS: 40 mph (65 kph) with gusts to 60 mph (95 kph)

RADIUS OF TROPICAL STORM-FORCE WINDS: 35 miles (55 kilometers)

MINIMUM CENTRAL PRESSURE: 997 millibars

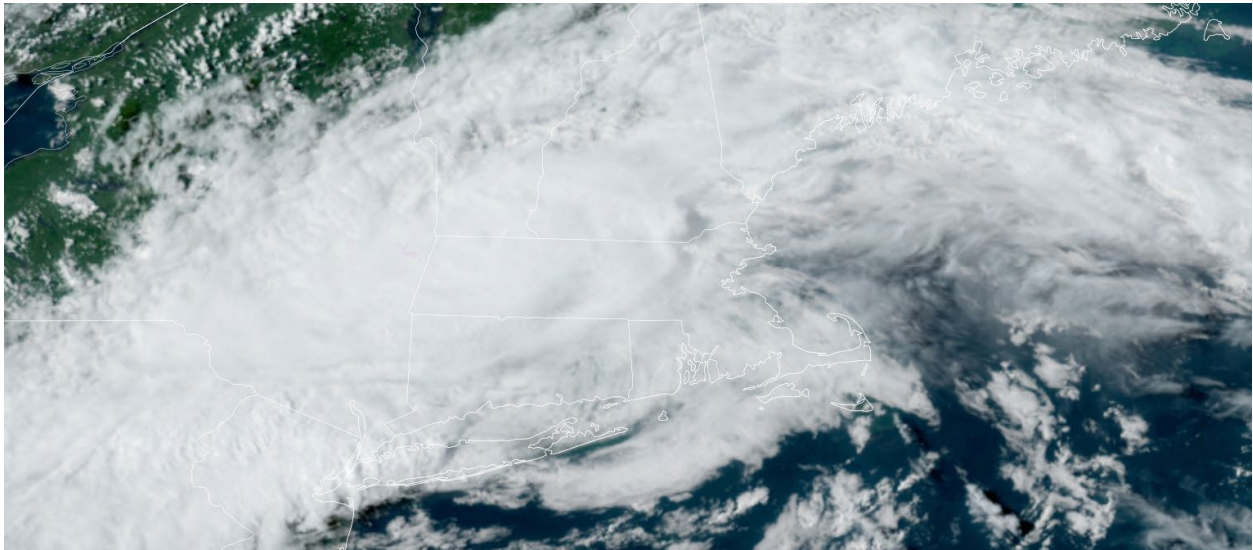
SAFFIR-SIMPSON SCALE RANKING: Tropical Storm

LANDFALL LOCATION: near Westerly, Rhode Island (United States)

LANDFALL INTENSITY: 60 mph (95 kph) – Tropical Storm

LANDFALL TIMEFRAME: approximately 12:15 PM (1615 UTC) August 22

Latest Satellite Picture



Source: NOAA / NASA / Colorado State University (RAAMB)

Discussion

Tropical Storm Henri, located approximately 20 miles (35 kilometers) southeast of Hartford, Connecticut, is currently tracking west-northwest at 7 mph (11 kph). Henri's satellite and radar signatures have continued to erode during the day after making landfall earlier in Rhode Island. The combination of moderate southeasterly vertical wind shear and dry/stable air entrainment off of the cooler Atlantic waters have additionally aided in this weakening. The primary rain shield has shifted into the western semicircle, which is typical for tropical cyclones that are in the early stages of undergoing extratropical transition. Doppler radar velocity data from Upton, New York, and Boston, Massachusetts, along with surface observations indicate that Henri's peak winds have continued to decrease, with any tropical-storm-force winds now confined to the offshore waters of Long Island Sound. Further reduction in winds will occur as the low-level wind field degrades with continued land interaction and more dry/stable air entrainment. Henri should weaken to a tropical depression this evening and become a post-tropical remnant low by Monday afternoon.

Henri is now moving west-northwestward and has finally made the much-anticipated sharp turn toward the west-northwest around the northeastern periphery of a mid- to upper-level low currently located over southern New Jersey. These two weather systems are forecast to slowly result in a counter-clockwise motion, with Henri's circulation absorbing the other low by Monday morning, possibly resulting in Henri stalling near the New York-Connecticut border. By early Monday afternoon, a weak mid-level trough currently moving across the Great Lakes region is expected to eject the cyclone or its remnants eastward to east-northeastward across southern New England and into the Gulf of Maine by Monday night, before dissipating near or over Nova Scotia on Tuesday. The new NHC track forecast is similar to the previous advisory track.

Please note: Although Henri's winds are weakening, this is a system that will continue to be a prolific rain producer. This is likely to result in significant flooding across southern New England and portions of the northern Mid-Atlantic states until Tuesday.

Key Messages from the National Hurricane Center

1. Heavy rainfall will continue to lead to considerable flash, urban, and small stream flooding, along with the potential for additional minor to isolated moderate river flooding over portions of Long Island, New England, eastern New York, New Jersey and northeast Pennsylvania.

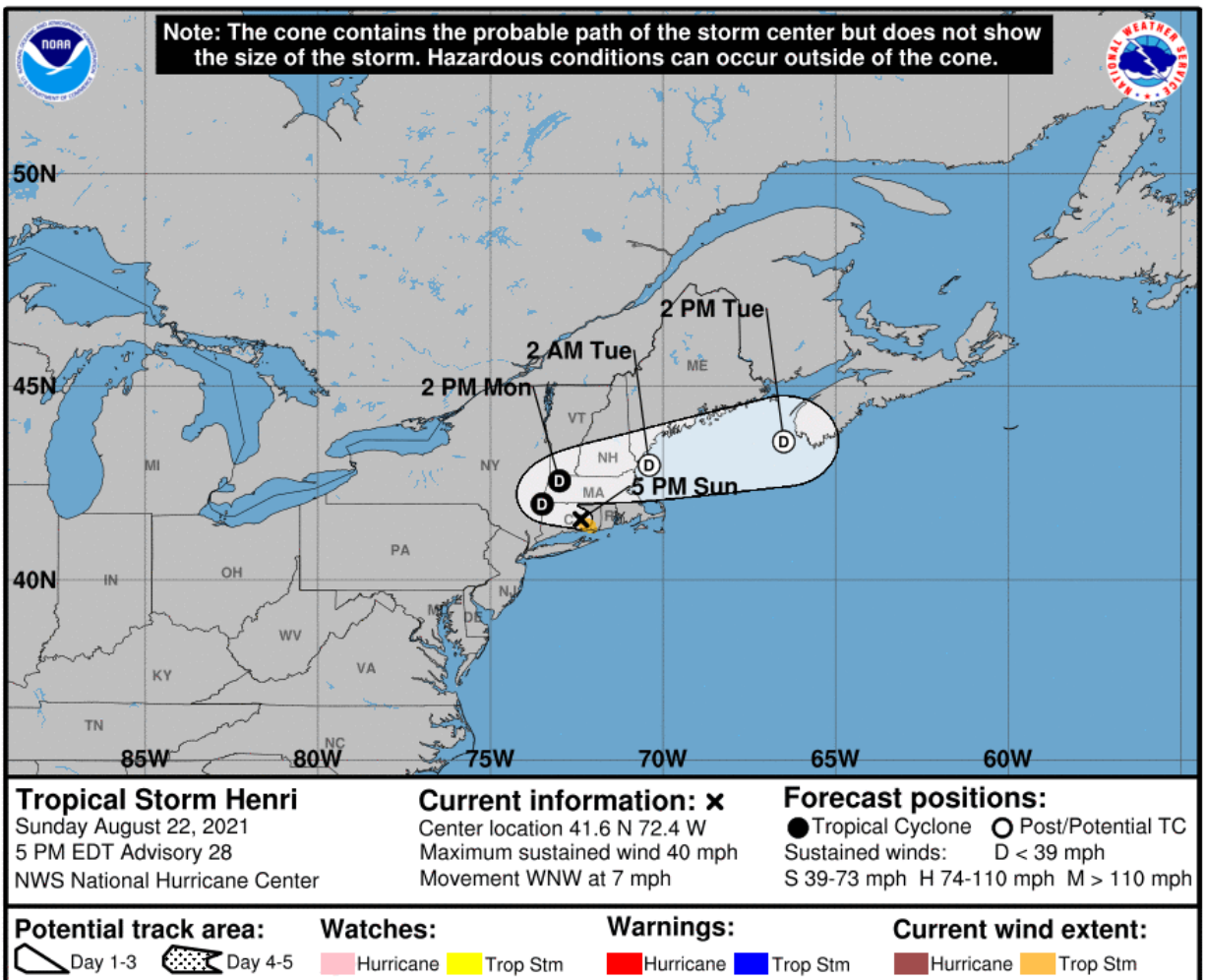
Additional Information

RAINFALL: Henri is expected to produce storm total rainfall of 3 to 6 inches with locally higher amounts expected over portions of Long Island, New England, southeast New York, New Jersey, and northeast Pennsylvania Sunday into Monday. Isolated maximum totals of 10 to 12 inches are possible across northern New Jersey into southern New York. Heavy rainfall from Henri will continue to result in considerable flash, urban, and small stream flooding, along with the potential for additional minor to isolated moderate river flooding.

WIND: Wind gusts to tropical storm force are possible along coastal areas of Connecticut and northern Long Island during the next few hours.

SURF: Swells are expected to continue across much of the east coast of the U.S. and Atlantic Canada today and continue into Monday. These swells could cause life-threatening surf and rip current conditions.

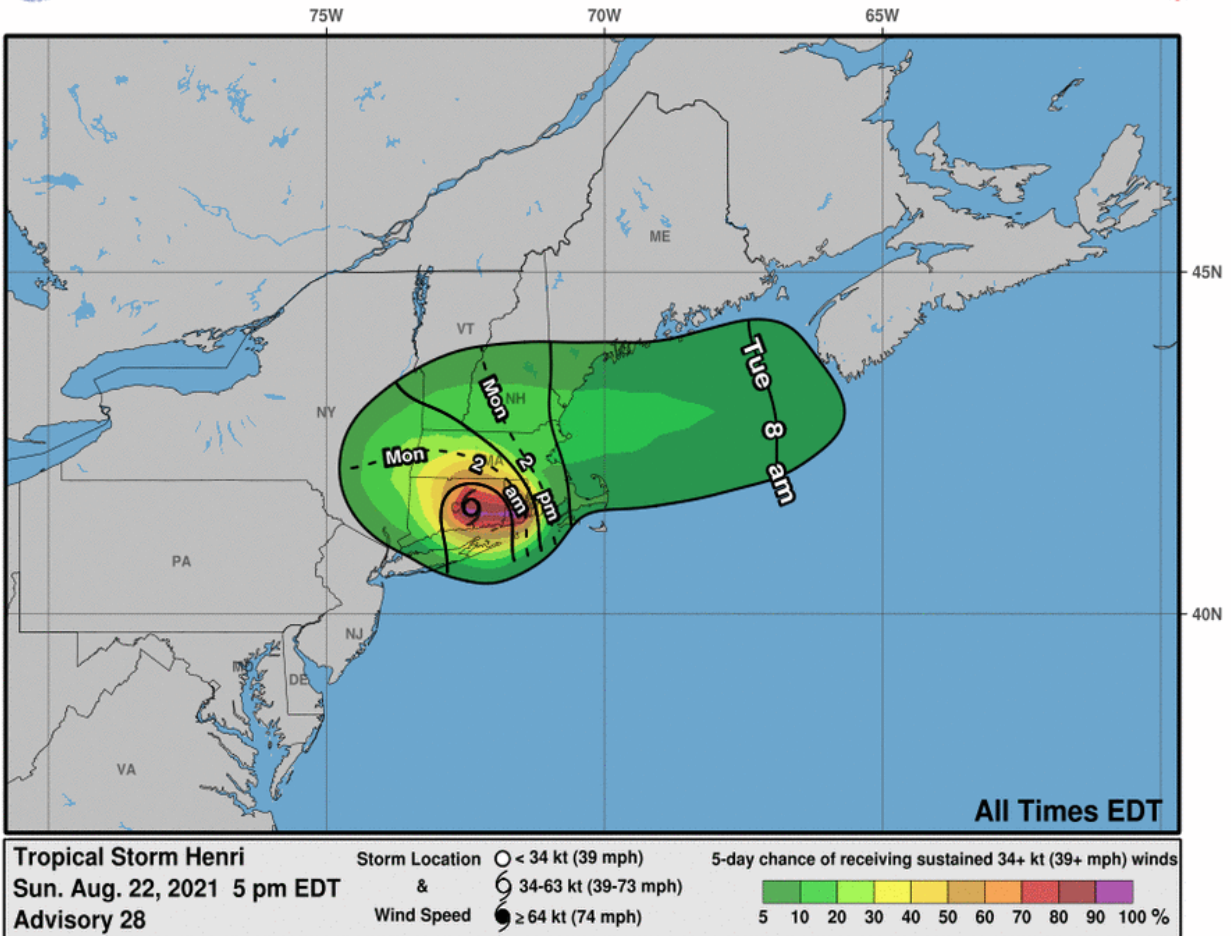
National Hurricane Center (NHC) Forecast



Most Likely Arrival Time of Tropical Storm-Force Winds

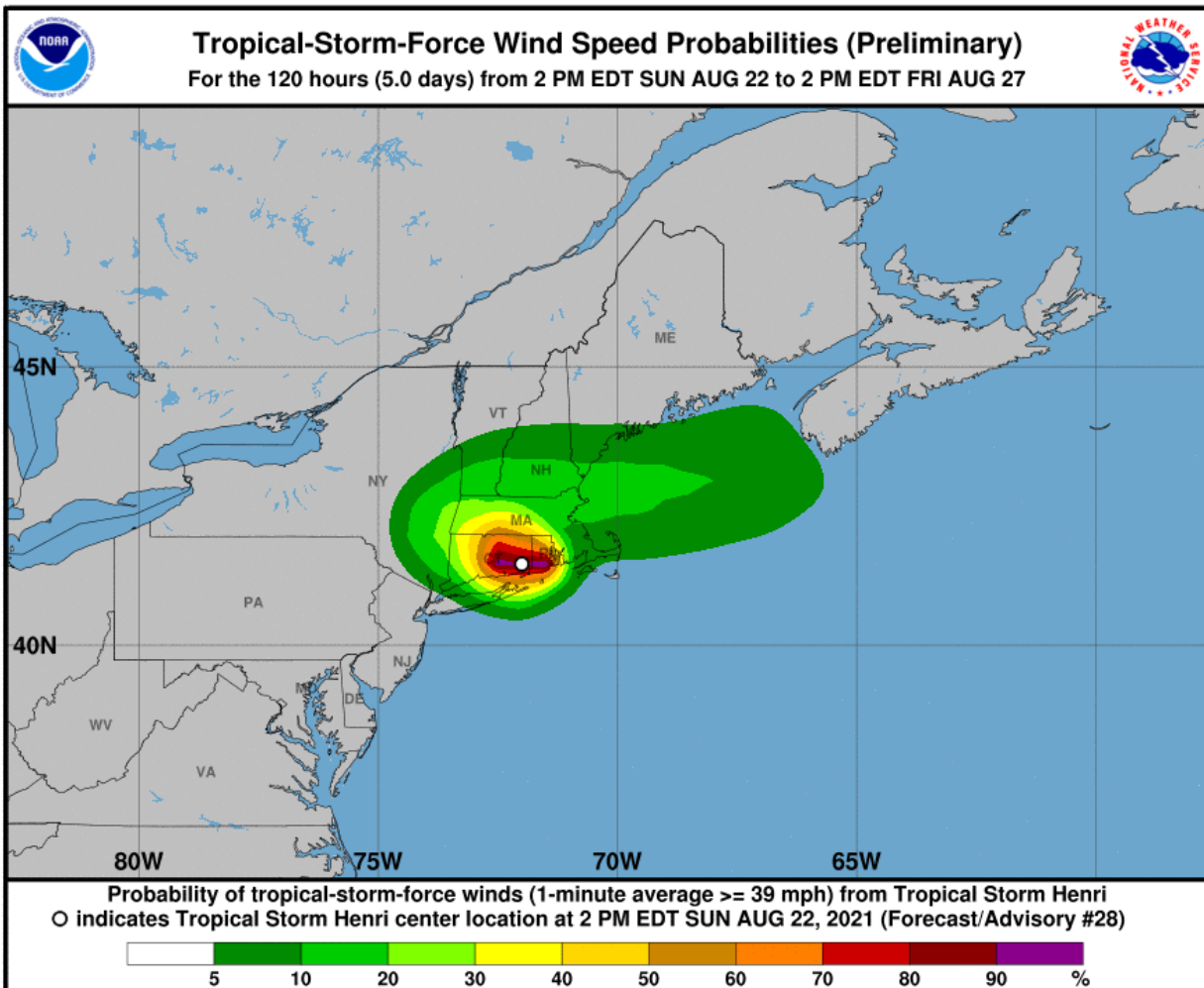


Most Likely Arrival Time of Tropical-Storm-Force Winds

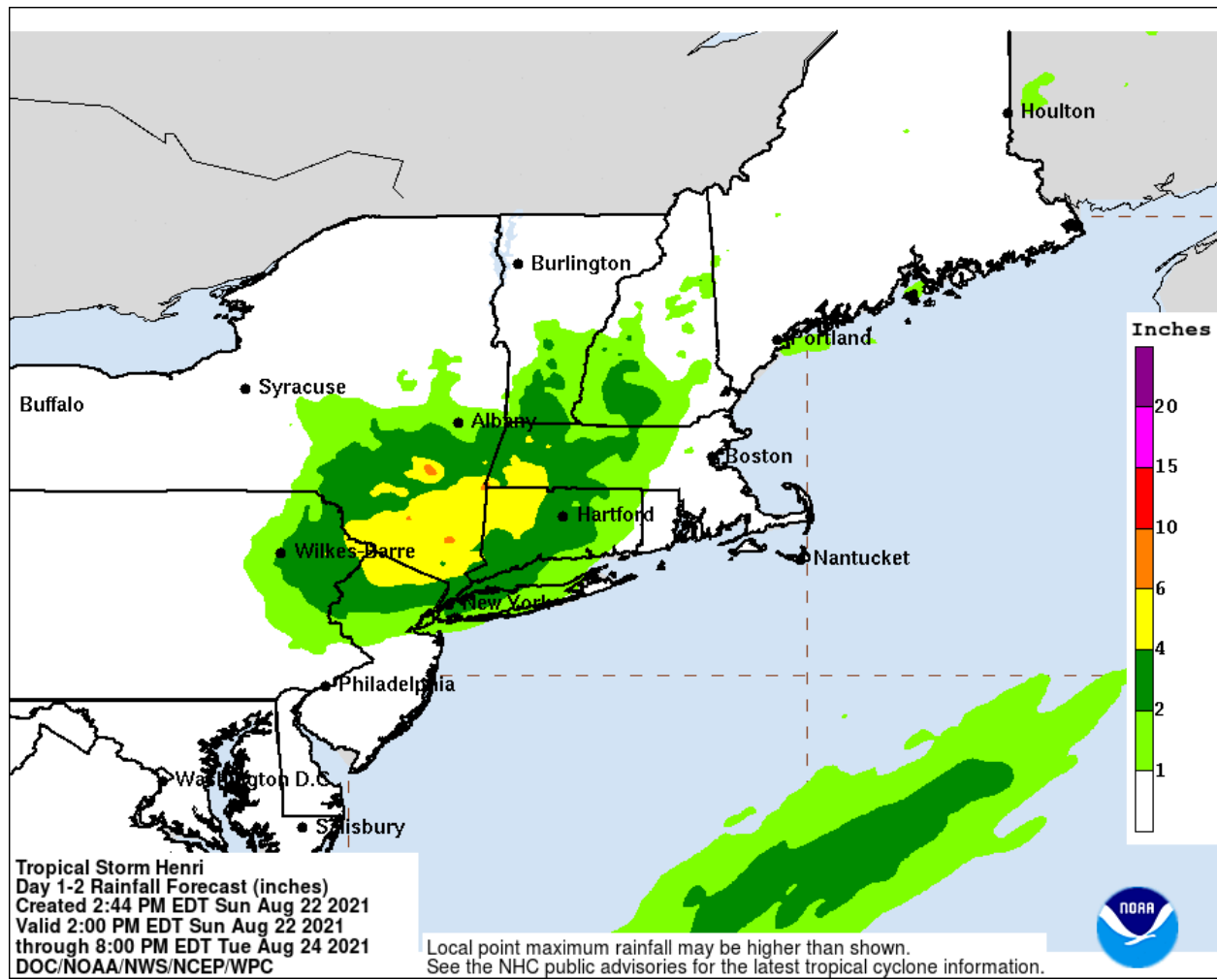


National Hurricane Center: Wind Speed Probabilities

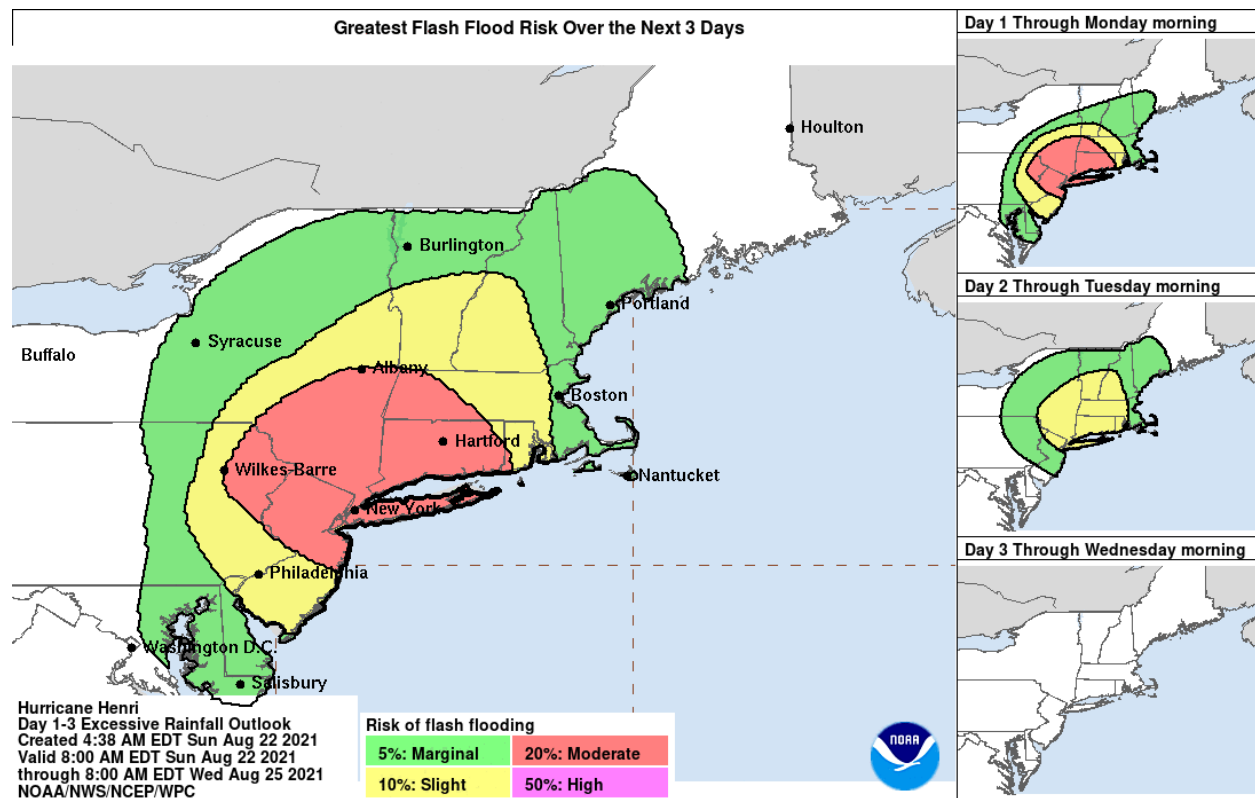
Tropical Storm-Force Wind Probabilities (≥ 40 mph (65 kph))



Weather Prediction Center: Rainfall Potential



Weather Prediction Center: Flash Flood Potential



Additional Information and Update Schedule

Wind intensity forecasts and forecast track information can be found via the National Hurricane Center at www.nhc.noaa.gov

NEXT CAT ALERT: Since landfall has occurred and rapid weakening has commenced, this will be the final Cat Alert. Full details on Henri's impacts will be found in this week's Weekly Cat Report.

Tropical Cyclone Intensity Classifications for Global Basins

WIND SPEED			BASINS AND MONITORING BUREAU						
KT	MPH	KPH	NE Pacific, Atlantic	NW Pacific	NW Pacific	SW Pacific	Australia	SW Indian	North Indian
			National Hurricane Center (NHC)	Joint Typhoon Warning Center (JTWC)	Japan Meteorological Agency (JMA)	Fiji Meteorological Service (FMS)	Bureau of Meteorology (BOM)	Meteo-France (MF)	India Meteorological Department (IMD)
30	35	55	Tropical Depression	Tropical Depression	Tropical Depression	Tropical Depression	Tropical Low	Tropical Depression	Deep Depression
35	40	65	Tropical Storm	Tropical Storm	Tropical Storm	Cat. 1 Tropical Cyclone	Cat. 1 Tropical Cyclone	Moderate Tropical Storm	Cyclonic Storm
40	45	75							
45	50	85			Severe Tropical Storm	Cat. 2 Tropical Cyclone	Cat. 2 Tropical Cyclone	Severe Tropical Storm	Severe Cyclonic Storm
50	60	95							
55	65	100							
60	70	110							
65	75	120	Cat. 1 Hurricane	Typhoon	Typhoon	Cat. 3 Severe Tropical Cyclone	Cat. 3 Severe Tropical Cyclone	Tropical Cyclone	Very Severe Cyclonic Storm
70	80	130							
75	85	140							
80	90	150							
85	100	160	Cat. 2 Hurricane			Cat. 4 Severe Tropical Cyclone	Cat. 4 Severe Tropical Cyclone	Intense Tropical Cyclone	
90	105	170							
95	110	175							
100	115	185	Cat. 3 Major Hurricane			Cat. 5 Severe Tropical Cyclone	Cat. 5 Severe Tropical Cyclone	Very Intense Tropical Cyclone	Super Cyclonic Storm
105	120	195							
110	125	205							
115	130	210							
120	140	220	Cat. 4 Major Hurricane			Super Typhoon	Super Typhoon		
125	145	230							
130	150	240							
135	155	250							
140	160	260	Cat. 5 Major Hurricane			Super Typhoon	Super Typhoon		
>140	>160	>260							

About Aon

Aon plc (NYSE:AON) is a leading global professional services firm providing a broad range of risk, retirement and health solutions. Our 50,000 colleagues in 120 countries empower results for clients by using proprietary data and analytics to deliver insights that reduce volatility and improve performance.

© Aon plc 2021. All rights reserved.

The information contained herein and the statements expressed are of a general nature and are not intended to address the circumstances of any particular individual or entity. Although we endeavor to provide accurate and timely information and use sources we consider reliable, there can be no guarantee that such information is accurate as of the date it is received or that it will continue to be accurate in the future. No one should act on such information without appropriate professional advice after a thorough examination of the particular situation.

Copyright © by Impact Forecasting®

No claim to original government works. The text and graphics of this publication are provided for informational purposes only. While Impact Forecasting® has tried to provide accurate and timely information, inadvertent technical inaccuracies and typographical errors may exist, and Impact Forecasting® does not warrant that the information is accurate, complete or current. The data presented at this site is intended to convey only general information on current natural perils and must not be used to make life-or-death decisions or decisions relating to the protection of property, as the data may not be accurate. Please listen to official information sources for current storm information. This data has no official status and should not be used for emergency response decision-making under any circumstances.

Cat Alerts use publicly available data from the internet and other sources. Impact Forecasting® summarizes this publicly available information for the convenience of those individuals who have contacted Impact Forecasting® and expressed an interest in natural catastrophes of various types. To find out more about Impact Forecasting or to sign up for the Cat Reports, visit Impact Forecasting's webpage at impactforecasting.com.

Copyright © by Aon plc. All rights reserved. No part of this document may be reproduced, stored in a retrieval system, or transmitted in any form or by any means, electronic, mechanical, photocopying, recording or otherwise. Impact Forecasting® is a wholly owned subsidiary of Aon plc.